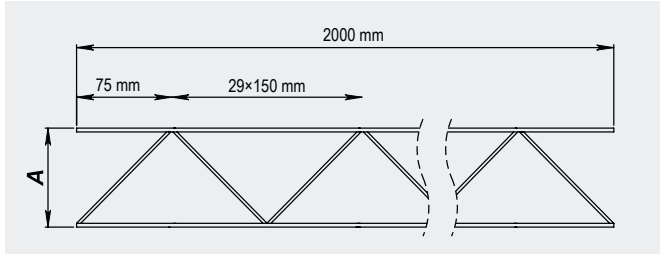


# SPACER SNAKE

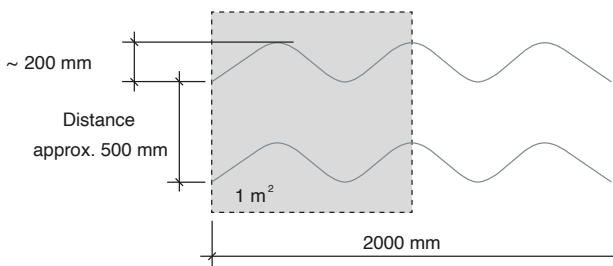
## Intended use

Allows quick and easy spacing of reinforcement mesh or bars. Ensures secure and stable footing for concrete pouring.

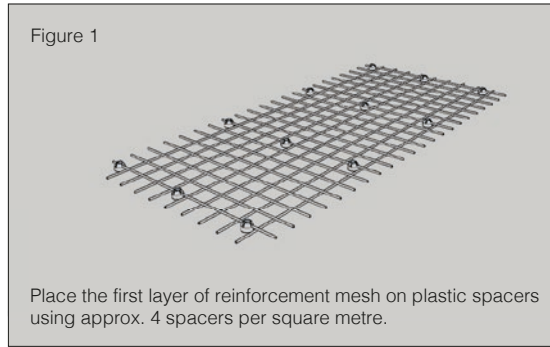


A = height	
In stock	30, 40, 50, 70, 80, 90, 100, 120, 130, 140, 160, 170, 180, 190, 200 mm
Length	2000 mm
Pack	25 pc.
Pallet	500 pc.

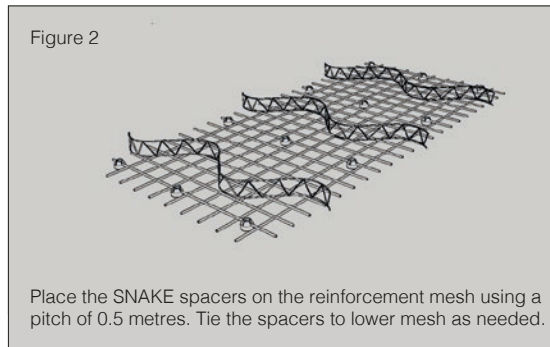
## Top view of spacer SNAKE



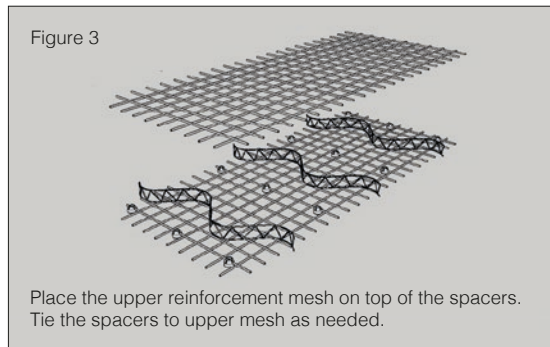
Consumption per 1m<sup>2</sup> = 1 pc.



Place the first layer of reinforcement mesh on plastic spacers using approx. 4 spacers per square metre.



Place the SNAKE spacers on the reinforcement mesh using a pitch of 0.5 metres. Tie the spacers to lower mesh as needed.

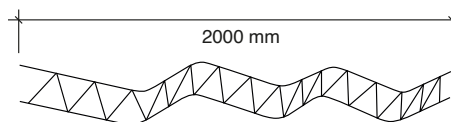


Place the upper reinforcement mesh on top of the spacers. Tie the spacers to upper mesh as needed.



## SAVINGS

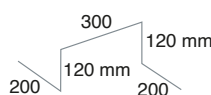
**VERSION A** Space SNAKE  
h=120 mm/m<sup>2</sup>



→ 0,615 kg/m<sup>2</sup>

↑ SAVINGS 82%

**VERSION B** 3D stirrup Ø 12 mm/m<sup>2</sup>  
Weight: 4 x 0.94 m x 0.888 kg/m



→ 3,34 kg/m<sup>2</sup>